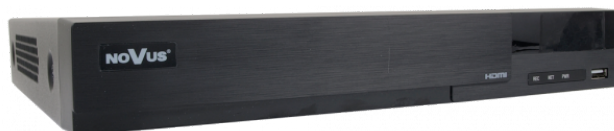




IP Recorder

NVR-6308P8-H1



6000 VSS IP

FUNCTIONS

VCA
ANALYSIS

4K HDMI

H.264+

H.265

5 Mpx
• REC

50 Mb/s
Stream

x8
V+A

240 fps
• REC

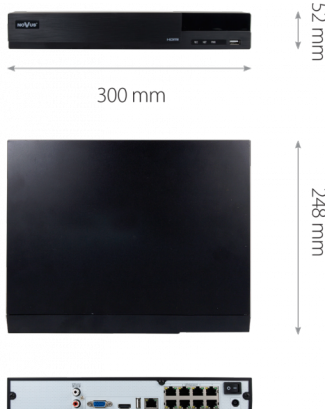
x2
Monitor

x1
HDD

KEY FEATURES

- 8 x PoE Ethernet ports
- 8 x video and audio channels
- Recording speed up to 240 fps at 3840 x 2160
- Supports resolution up to 3840 x 2160
- Recorded stream size: 50 Mb/s in total from all cameras
- 1 x internal place for HDD mounting
- 2 x monitor outputs (HDMI 4K UltraHD, VGA)
- Intelligent image analysis

DIMENSIONS



Video	
Maximum Supported Camera Resolution	3840 x 2160
Compression	H.264, H.264+, H.265
Monitor Output	main (split screen, full screen, sequence): 1 x HDMI (4K UltraHD), 1 x VGA (up to 2 monitors simultaneously)
Dualstreaming Support	yes*
Audio	
Audio Input/Output	- / 1 x line-out (RCA)
Recording	
Stream Size	50 Mb/s in total from all cameras
Recording Mode	continuous, triggered by: manual, motion detection
Prealarm/Postalarm	up to 5 s/up to 600 s
Display	
Display Speed	240 fps (8 x 30 fps)*
Playback	
Playback Speed	240 fps (8 x 30 fps for 3840 x 2160) *
Recorded Data Search	by date/time, events
Backup	
Backup Methods	USB port (HDD or Flash memory), network
Backup File Format	AVI
Storage	
Internal Storage	available mount: 1 x HDD 3.5" 10 TB SATA
Total Internal Capacity	10 TB
Alarm	
Camera Alarm Input/Output	supports IP camera's alarm input/output
Motion Detection	supports camera's motion detection
System Reaction to Alarm Events	buzzer, recording activation, PTZ, e-mail with attachment
Intelligent image analysis	
Supported Functions	Exception, Scene Change, Video Blurred, Video Color Cast, Tripwire, Zone entrance, Abandoned Object, Object Disappearance
Network	
Network Interface	1 x Ethernet - RJ-45 interface, 10/100 Mbit/s 8 x Ethernet PoE (IEEE802.3af, Class 3) - RJ-45 interface, 10/100 Mbit/s
Network Protocols Support	HTTP, TCP/IP, IPv4, HTTPS, FTP, DHCP, DNS, DDNS, NTP, RTSP, UPnP, SNMP, SMTP
PC/MAC Software	NMS, Internet Explorer, NVR-6000 Viewer/NVR-6000 Viewer
Mobile applications	SuperLive Plus (iPhone, Android)
Number of Simultaneous Connections	up to 2 clients
Bandwidth	50 Mb/s in total to all client workstations
PTZ	
PTZ Functions	pan/tilt/zoom, preset commands*
Auxiliary Interfaces	
USB Ports	2 x USB 2.0,
Operating system	
Operating System	Linux
Operation Mode	triplex
OSD	languages: Polish, English, others
Control	PC mouse and IR remote controller (in-set included), network
System Diagnostic	automatic control of: HDDs, network, camera connection loss
Security	password protection, IP filtering, MAC filtering
Installation parameters	
Dimensions (mm)	300 (W) x 52 (H) x 248 (D)
Weight	1.16 kg (without HDD)
Power Supply	100 ~ 240 VAC
Power Consumption	20 W (with 1 HDD) + 100 W PoE
Operating Temperature	-10°C ~ 50°C

Additional 8T disk mounting holes are available from the NVR6308P8H1170620xxxx serial number
Support for intelligent image analysis works only with NOVUS IP 3000 series cameras
* Available with dual streaming mode.