

Novus Cameras for the use with NMS ANPR system

1. Set:

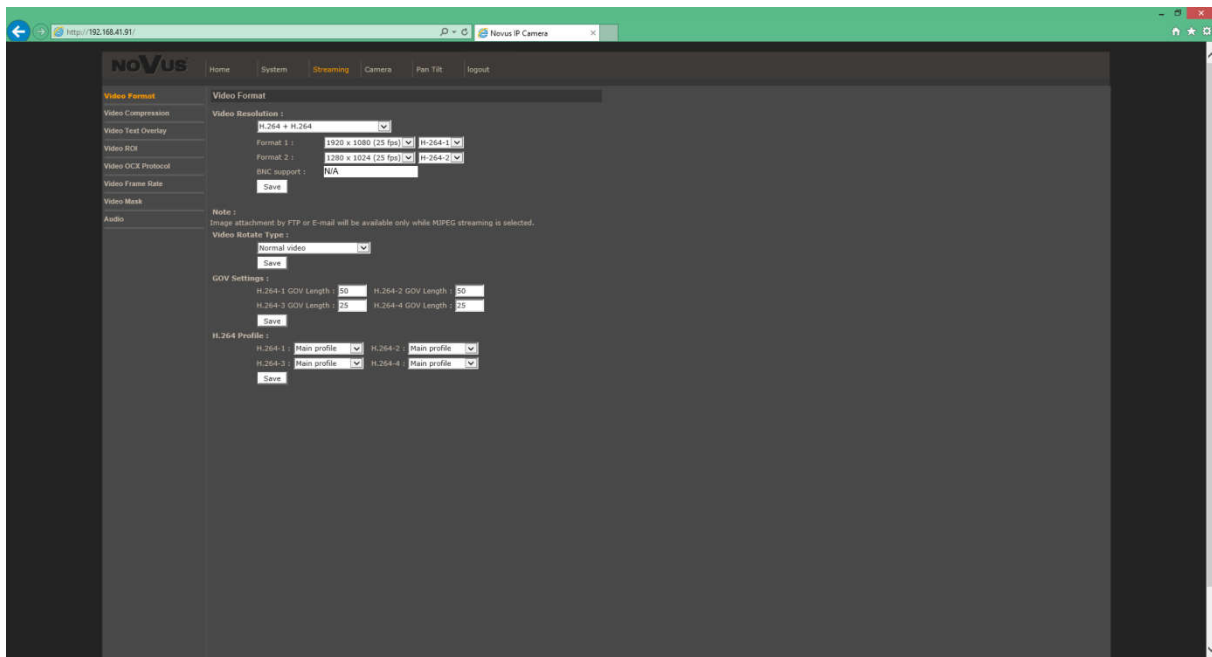
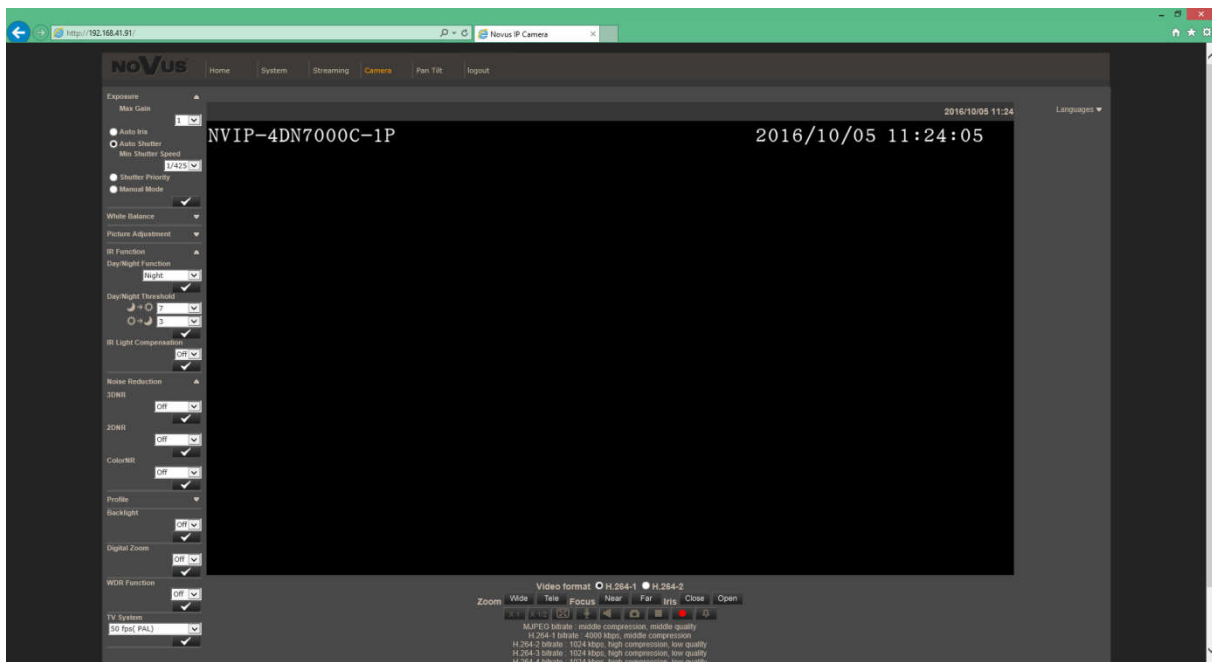
Camera: NVIP-4DN7000C-1P

Lens: NVL-3MP660D/IR

IR LED Illuminator: NV-IR60/150LED

Camera Housing: NVH-160H/X

Proposed camera settings are as below (modifications to the factory settings):



Exposure :

Max Gain: 1

Auto Shutter

Min Shutter Speed: 1/425

Day/Night Function: Night

TV System: 50 fps (PAL)

Video Resolution:

Format 1: 1920x1080 (25 fps)

Proposed additional possibilities in adjusting settings:

Exposure :

Max Gain: 0 or 1

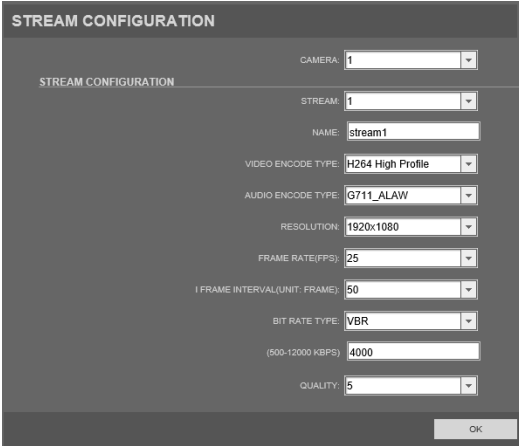
CBR mode setting:

Enable H.264 CBR mode: On or Off

TV System: 50 fps (PAL) or WDR 2 shutter (PAL)

2. NVIP-6DN5021H/IRH-1P

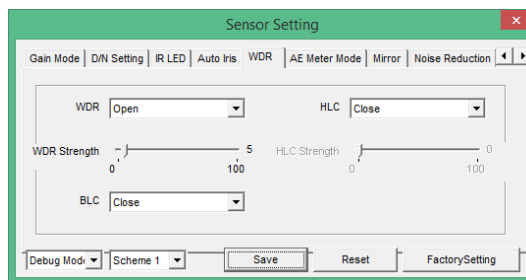
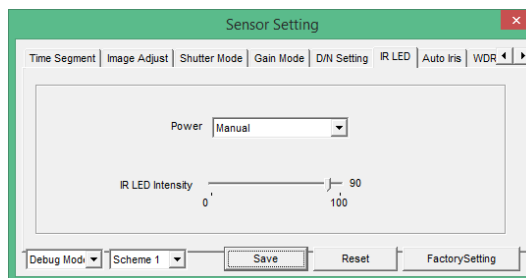
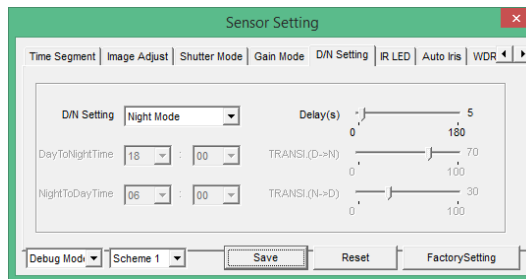
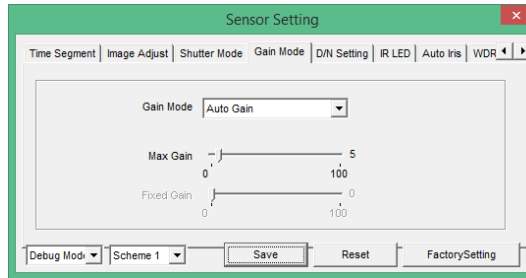
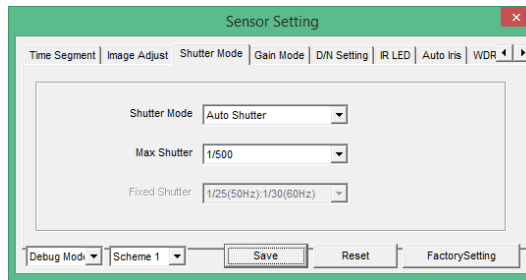
Proposed camera settings are as below (modifications to the factory settings):



The screenshot displays the 'STREAM CONFIGURATION' interface. It features a dark grey background with white text and dropdown menus. The settings are as follows:

Parameter	Value
CAMERA	1
STREAM	1
NAME	stream1
VIDEO ENCODE TYPE	H264 High Profile
AUDIO ENCODE TYPE	G711_ALAW
RESOLUTION	1920x1080
FRAME RATE(FPS)	25
I FRAME INTERVAL(UNIT: FRAME)	50
BIT RATE TYPE	VBR
(500-12000 KBPS)	4000
QUALITY	5

An 'OK' button is located at the bottom right of the configuration window.



Video System: 50Hz

Video Stream Resolution: 1920x1080 (25 fps)

Video Bitrate: 4000 kbps

Shutter Mode

Shutter Mode: Auto Shutter

Max Shutter: 1/500

Gain Mode

Gain Mode: Auto Gain

Max Gain: 5

D/N Setting: Night Mode

IR LED

Power: Manual

IR LED Intensity: 90

WDR

WDR: Open

WDR Strength: 5

Proposed additional possibilities in adjusting settings:

Shutter Mode

Shutter Mode: Auto Shutter

Max Shutter: 1/500 or 1/1000

Gain Mode

Gain Mode: Auto Gain

Max Gain: 5 - 10

IR LED

Power: Auto or Manual

IR LED Intensity: 50 - 100

WDR

WDR: Open

WDR Strength: 1-10