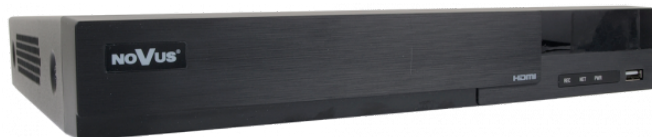


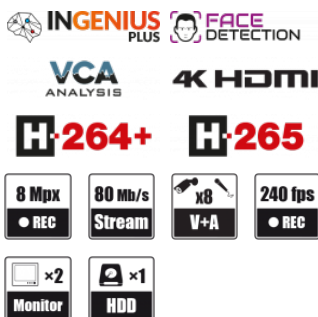


8-channel IP Recorder

NVR-6308P8-H1-II



FUNCTIONS



The recorder is dedicated to work with NOVUS 6000 series IP cameras. Detailed data can be found in the compatibility table available in the DOWNLOADABLE FILES tab.

Video	
IP Cameras	up to 8 channels at 3840 x 2160 resolution (video + audio)
Maximum Supported Camera Resolution	3840 x 2160
Compression	H.264, H.265, H.265+, H.265 Smart
Monitor Output	main (split screen, full screen, sequence): 1 x HDMI (4K UltraHD), 1 x VGA (up to 2 monitors simultaneously)
Dualstreaming Support	yes
Fisheye Support	yes, 6000 IP series cameras using any web browser, N-VID6, N Control 6000
Audio	
Audio Input/Output	1 x line-in (RCA) / 1 x HDMI, 1 x line-out (RCA)
Recording	
Stream Size	80 Mb/s in total from all cameras
Recording Mode	continuous, triggered by: manual, alarm input, motion detection, intelligent image analysis functions
Prealarm/Postalarm	up to 5 s/up to 600 s
Display	
Display Speed	240 fps (8 x 30 fps)
Playback	
Playback Speed	240 fps (8 x 30 fps)
Recorded Data Search	by date/time, events, image analysis events, POS, motion in a defined area, tags
Backup	
Backup Methods	USB port (HDD or Flash memory), network
Backup File Format	MP4, AVI, RPAS (player included)
Storage	
Internal Storage	available mount: 1 x HDD 3.5" 10 TB SATA
Total Internal Capacity	10 TB
Alarm	
Camera Alarm Input/Output	supports IP camera's alarm input/output
Motion Detection	supports camera's motion detection
System Reaction to Alarm Events	buzzer, alarm output activation, recording activation, PTZ, e-mail with attachment, Full Screen, PUSH message, voice prompt, snapshot
Intelligent image analysis	
Supported Functions	Exception, Scene Change, Video Blurred, Video Color Cast, Tripwire, Zone entrance, Abandoned Object, Object Disappearance, Crowd detection, Face Detection, People Counting, Perimeter Intrusion Detection by pedestrian or vehicle, Line Cross Detection by pedestrian or vehicle, License Plate Recognition (LPR)
Database Capacity	1000 license plates
Network	
Network Interface	1 x Ethernet - RJ-45 interface, 10/100/1000 Mbit/s 8 x Ethernet PoE (IEEE802.3af, Class 3) - RJ-45 interface, 10/100 Mbit/s
Network Protocols Support	HTTP, TCP/IP, IPv4/v6, HTTPS, FTP, DHCP, DNS, DDNS, NTP, RTSP, UPnP, SNMP, IEEE 802.1X, PPPoE, SMTP, P2P, POS, HTMLS
PC/MAC Software	NOVUS MANAGEMENT SYSTEM VSS, NOVUS MANAGEMENT SYSTEM AC, NMS, Internet Explorer, Firefox, Chrome, Opera, N Control 6000, Edge/Safari, N Control 6000
Mobile applications	N-VID6 (iPhone, Android)
Number of Simultaneous Connections	up to 64 clients, up to 12 main streams or 32 substreams or 8 playback streams in total
Bandwidth	80 Mb/s in total to all client workstations
PTZ	
PTZ Functions	pan/tilt/zoom, preset commands
Auxiliary Interfaces	
USB Ports	2 x USB 2.0
Operating system	
Operating System	Linux
OSD	languages: Polish, English, others
Control	IR remote controller, PC mouse (in-set included), network
System Diagnostic	automatic control of: HDDs, network, camera connection loss
Security	password protection, IP filtering, MAC filtering, ARP guard
Installation parameters	
Dimensions (mm)	300 (W) x 52 (H) x 248 (D)
Weight	1.16 kg (without HDD)
Power Supply	100 ~ 240 VAC
Power Consumption	20 W (with 1 HDD) + 96 W PoE
Operating Temperature	-10°C ~ 50°C

The availability of individual functions (including image analysis) depends on the model of the cameras used, as well as the software version of the recorder and cameras. Presented display and playback speeds are achieved using dual-streaming. Detailed data on hard drives can be found in the compatibility table available in the DOWNLOADABLE FILES tab.

KEY FEATURES

- 8 x PoE Ethernet ports
- 8 x video and audio channels
- Recording speed up to 240 fps at 3840 x 2160
- Supports resolution up to 3840 x 2160
- Recorded stream size: 80 Mb/s in total from all cameras
- 1 x internal place for HDD mounting
- 2 x monitor outputs (HDMI 4K UltraHD, VGA)
- Intelligent image analysis

DIMENSIONS

